

Offensive Positions Chart

by Assistant Coach Tarig Holman

FOOTBALL TERMINOLOGY, ESPECIALLY REGARDING POSITIONS IS PRIMARILY PREDICATED ON SPACIAL RELATIONSHIP TO THE LINE OF SCRIMMAGE (DOTTED LINE).

WIDE RECEIVER
(widest receiver, also called a split end or "X")

WR

QUARTER BACK
(1/4 as deep as the full back)

QB

HALFBACK
(half as deep as the fullback)

HB

FULLBACK
(deepest back, also called a tail back)

FB

CENTER
(the center of the line, snaps the ball)

OT

OG

C

OG

OT

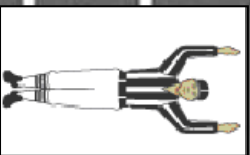
TE

TIGHT END
(end man on the line also called "Y")

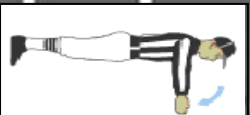
WR

WIDE RECEIVER
(widest receiver, this receiver is off the ball and sometimes called a flanker or "Z")

Cheer on the Cougar Offense when you see the official make these signals.....



- TOUCH DOWN
- FIELD GOAL
- 1 OR 2 PT CONVERSION



FIRST DOWN
(MONTGOMERY WILL HAVE AT LEAST 4 MORE TRIES TO SCORE OR GET ANOTHER 1ST DOWN)

GUARDS
(these two linemen "guard" the center and QB on both sides)

TACKLES
(usually the biggest, strongest players on the field, the left tackle is known as the most important position in football)

RULE TO KNOW ON OFFENSE:
- THERE MUST BE AT LEAST 7 MEN ON THE LINE OF SCRIMMAGE. ONLY THE TWO PLAYERS ON THE ENDS ARE ELIGIBLE TO CATCH THE BALL (IN THE ABOVE FORMATION WR & TE). FAILURE TO DO SO RESULTS IN AN ILLEGAL FORMATION PENALTY OF 5 YARDS.